

VAMP 50 Series and VAMP 57 Facia Label Instruction

This instruction is applicable for all VAMP 50 Series products (V50, V52, V55 and V59) and VAMP 57.

The relay is provided with twelve LED indicators:

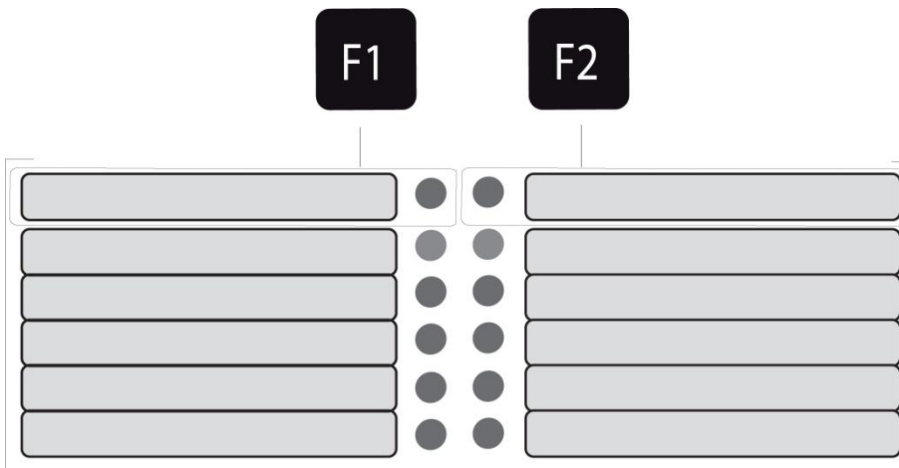


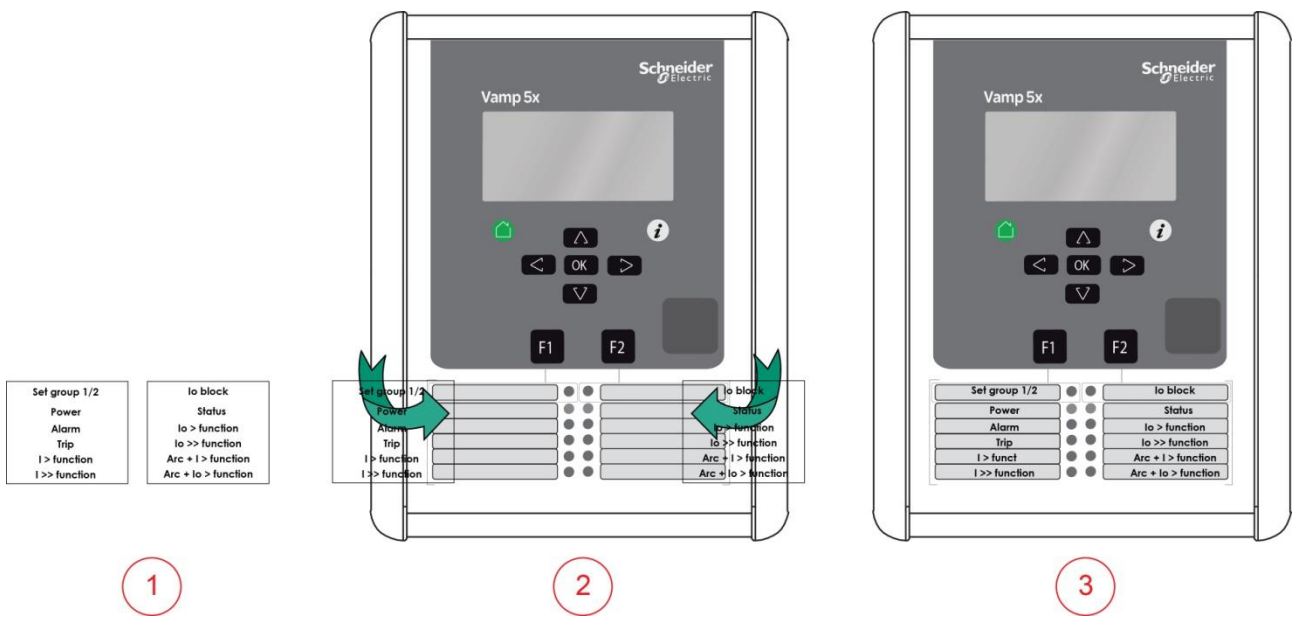
Figure 1. Operation indicators of the relay

LED indicator	Meaning	Measure/ Remarks
F1 / F2 LED lit	Corresponding function key pressed / activated	Depending of function programmed to F1 / F2
Power LED lit	The auxiliary power has been switched on	Normal operation state
Status LED lit	Internal fault, operates in parallel with the self supervision output relay	The relay attempts to reboot [REBOOT]. If the error LED remains lit, call for maintenance.
A- H LED lit	Application-related status indicators.	Configurable

An example of the V50, V52, V55, V57 and V59 alarm facia label:

Set group 1/2 (F1)	Io block (F2)
Power	Status
Alarm (A)	Io > function (B)
Trip (C)	Io >> function (D)
I > function (E)	Arc + I > function (F)
I >> function (G)	Arc + Io > function (H)

Facia Label Instruction



Below are 8 pieces of V50 series labels and 4 pieces of V57 labels, including examples. Following your own design, choose suitable places for every indication LED of VAMP 5x relay accordingly. Transparent film printing material is advisable.

VAMP 50 series:



Example:

Group 1/2 Power Alarm Trip I > function I >> function	Io block Status Io > function Io >> function Arc + I > function Arc + Io > function		
---	---	--	--

Your own design:

--	--	--	--

VAMP 57:

Example:

Group 1/2 Overcurrent Power Overcurrent Alarm Earth-Fault Alarm Volteq Alarm LedG*	Group 1/2 Earth-Fault Status Overcurrent Trip Earth-Fault Trip Volteq Trip AR On
---	---

Your own design:

--	--

Schneider Electric

35 rue Joseph Monier
92506 Rueil-Malmaison
FRANCE

Phone: +33 (0) 1 41 29 70 00
Fax: +33 (0) 1 41 29 71 00

www.schneider-electric.com

Publishing: 8/2015

© 2015 Schneider Electric Industries SAS - All rights reserved.
Electrical equipment should be installed, operated, serviced,
and maintained only by qualified personnel. No responsibility
is assumed by Schneider Electric for any consequences
arising out of the use of this material.